

# Simply Me Skin Care

Skin Enhancing  
Effect Pigments

Spring 2021

**SunChemical<sup>®</sup>**

a member of the DIC group



Color & Comfort

working for you.



## Content

Deliver illuminating results to today's simplified skin care routines.

With effects pigments in skin care, amplify products claims that deliver both color and instant results quickly while actives work overtime. Achieve radiance and elevate the self-care experience with low loadings of effects for big impacts to formulations.

- Beauty Movements
- Skin Enhancing Routine
- Inspired Formulations



# Beauty Movements

## Self-Care



Prioritizing balance to reduce stress and take care of oneself and skin health, to better take care of others

## Simplification



With sustainability in mind, focus on essential, purposeful products that deliver more with less

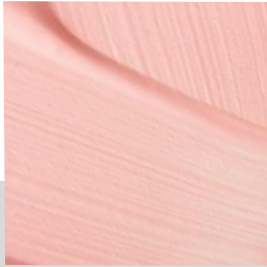
## Skinimalism



Simplify complicated routines and pare down to the basics, tailored to individual needs, enhancing natural skin



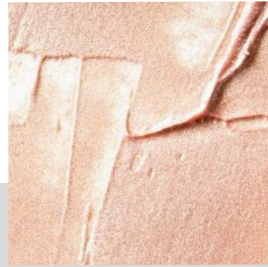
# Popular effect pigments for skin care to create skinimalist shades



## Rosé Tones

- [Cloisonné® Vibrant Raspberry\\*](#)
- [Chione™ Electric Fuchsia](#)

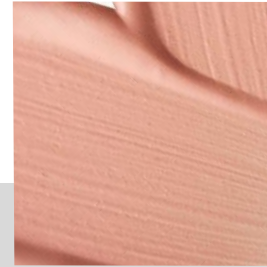
Effect pigments to build variations of pink shades for a rosé glow.



## Peach Tones

- [Chione™ Electric Sunset](#)
- [Cloisonné® Gold\\*](#)

Effect pigments to create complementary peach tone shades in skin care.



## Nude Tones

- [Gemtone® Radiant Nude\\*](#)
- [Gemtone® Tan Opal\\*](#)
- [Timica® Terra Colors\\*](#)

Natural mica effect pigments used to create second skin nude shades.



## Sheen & Radiance

- [Flamenco® Velvet\\*](#)
- [Chione™ HD Infinite White](#)

Natural and synthetic mica products offering sheer radiance and soft texture.

\*The mica in our natural mica-based effect pigments are ethically and sustainably sourced from our US mica mine in Hartwell, GA, USA. Take a virtual tour of our US mica mine [here!](#)

# Sun Chemical offers a portfolio of certified products supporting skin care product claims and certifications

Our broad portfolio includes unique effect pigments and performance minerals that are:

- **Vegan**
- **Free from organic dyes**
- **Halal certified**
- **RSPO certified**
- **EFfCI\* certified**
- **COSMOS\* certified**





## Illumin-eyezing Cream Peach Sunrise

Illuminize and let your eyes shine first! An eye cream that instantly brightens while targeting dark circles and improving tone over time.



**Chione™ Electric Sunset** is a synthetic mica based effect pigment providing a peach shade and offering light reflecting properties to awaken and illuminate eyes.

Biophytex™ boosts microcirculation to improve evenness of skin tone, and anti-dark eye circles.

# Illuminizing Eye Cream

## Peach Sunrise

CC-US-21-35399-121

Phase	Tradename	INCI	Concentration %	Function
A	Cetiol® Sensoft	Propylheptyl Caprylate	2.00	Emollient
	Luvitol® Lite EM	Hydrogenated Polyisobutene	2.00	Emollient
	Cetiol® CC	Dicaprylyl Carbonate	2.25	Emollient
	Lanette® 16	Cetyl Alcohol	2.00	Structurant
	Emulgade® 1000 NI	Cetearyl Alcohol, Ceteareth-20	2.50	Emulsifier (O/W)
	Cloisonné® Gold 222C	Mica, Titanium Dioxide (CI 77891), Iron Oxides (CI 77491)	0.50	Effect pigment
	Chione™ Electric Sunset SK90D	Synthetic Fluorphlogopite, Titanium Dioxide (CI 77891), Iron Oxides (CI 77491), Silica	0.25	Effect pigment
	Water, demin.	Aqua	79.30	
B	Glycerin	Glycerin	2.00	Humectant
	Cosmedia® SP	Sodium Polyacrylate	0.65	Rheology modifier
	Edeta® BD	Disodium EDTA	0.05	Complexing agent
	Preservative		1.00	Preservative
	Biophytex™ LS 9832	Aqua, Butylene Glycol, Panthenol, Escin, Glycerin, Ruscus Aculeatus Root Extract, Ammonium Glycyrrhizate, Centella Asiatica Extract, Hydrolyzed Yeast Protein, Calendula Officinalis Flower Extract	3.00	Active ingredient
C				
D	Xiameter PMX-200 Silicone Fluid 5CS	Dimethicone	2.50	Conditioning agent

# A skin enhancing routine featuring effect pigments that create color and deliver glowing results



Wake up your skin with a vegan face serum that hydrates and boosts radiance with a blushing tint.

[Get the formula](#)



A multi-tasking lotion that moisturizes and protects against photo-aging and pollution while adding a sheer second skin glow.

[Get the formula](#)



Illuminize and let your eyes shine first! An eye cream that instantly brightens while targeting dark circles and improving tone over time.

[Get the formula](#)



A multi-tasking essence mist to resurface, reduce lines and refine pores while providing hydrating radiance during the day.

[Get the formula](#)

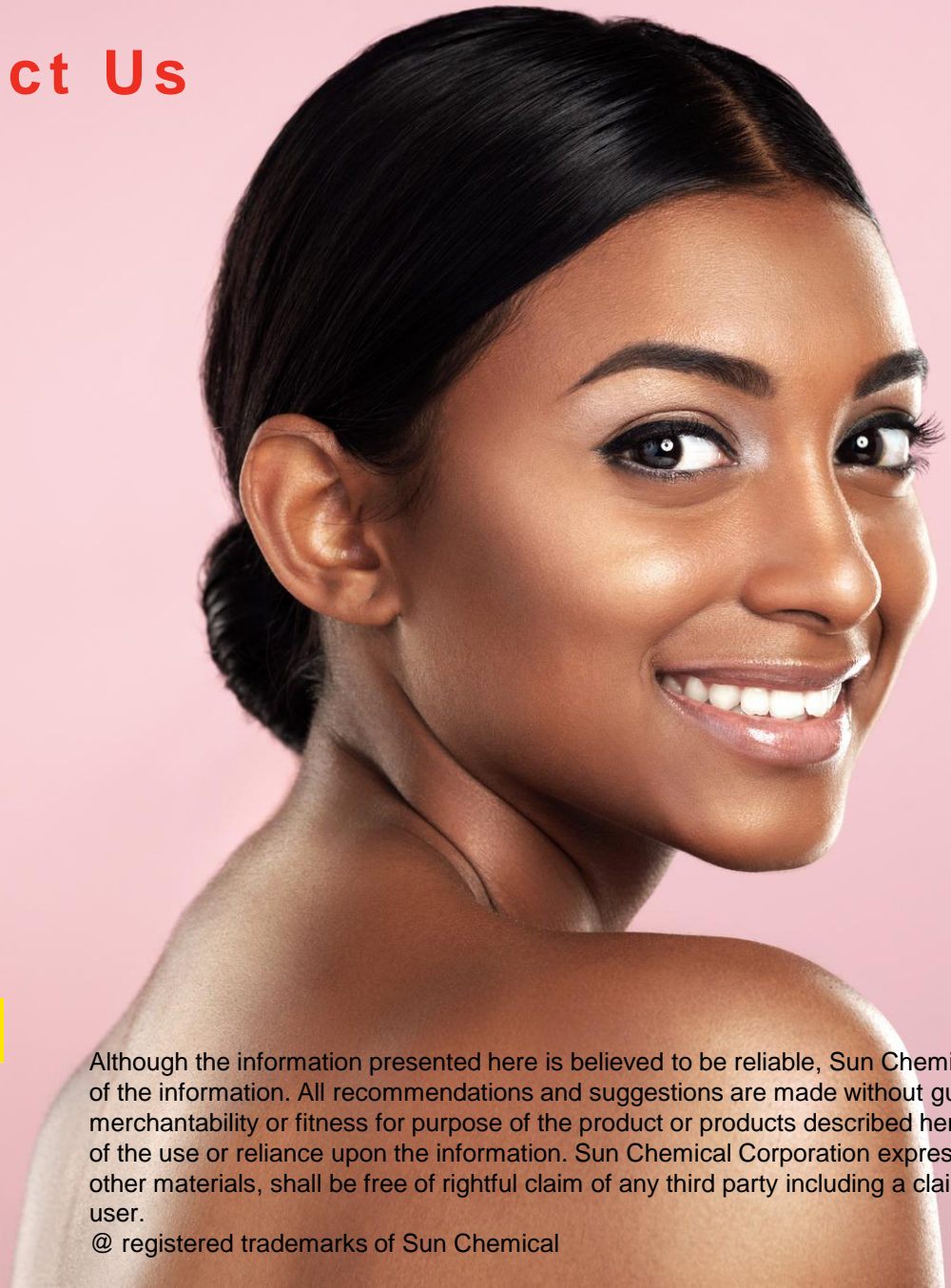


Mask off the day with a skin soothing wash off mask that leaves your skin moisturized and nurtured.

[Get the formula](#)



# Contact Us



- [Visit](#) our cosmetics website
- [Register](#) for an account with Pigment Finder to find, filter and explore our portfolio of effect pigments and performance minerals



- [Subscribe](#) to receive email newsletters
- For more information, contact your account manager

Although the information presented here is believed to be reliable, Sun Chemical Corporation makes no representation or guarantee to its accuracy, completeness or reliability of the information. All recommendations and suggestions are made without guarantee, since the conditions of use are beyond our control. There is no implied warranty of merchantability or fitness for purpose of the product or products described herein. In no event shall Sun Chemical Corporation be liable for damages of any nature arising out of the use or reliance upon the information. Sun Chemical Corporation expressly disclaims that the use of any material referenced herein, either alone or in combination with other materials, shall be free of rightful claim of any third party including a claim of infringement. The observance of all legal regulations and patents is the responsibility of the user.

@ registered trademarks of Sun Chemical